



Founded in 1946

Project: \_\_\_\_\_

Items: \_\_\_\_\_

Quantity: \_\_\_\_\_

Approval: \_\_\_\_\_

Date: \_\_\_\_\_

18 DOOR LOCKERS

## 18 Door Lockers

Multi-User Steel Lockers can be used in all types of facilities and industries, making this product perfect for any environment. Our variety of designs work for all different needs!

### Features:

- 3 Columns of 6 locker compartments
- Steel construction
- Available in 12", 15", and 18" depths.
- Sequentially numbered labels provided for easy identification.
- Custom colors available
- Ships fully assembled
- Mesh grid vented

### Benefits:

- 3 Column sets are pre-attached.
- All lockers open with door pulls and will accept padlocks or flat key locks (both not included).
- Doors are vented for security and clear identification of personal items.
- Box bases prevent dirt, dust, and debris from accumulating under the lockers, keeping the locker area clean and reducing labor costs.
- Sturdy steel design secures locked items.



WL-618

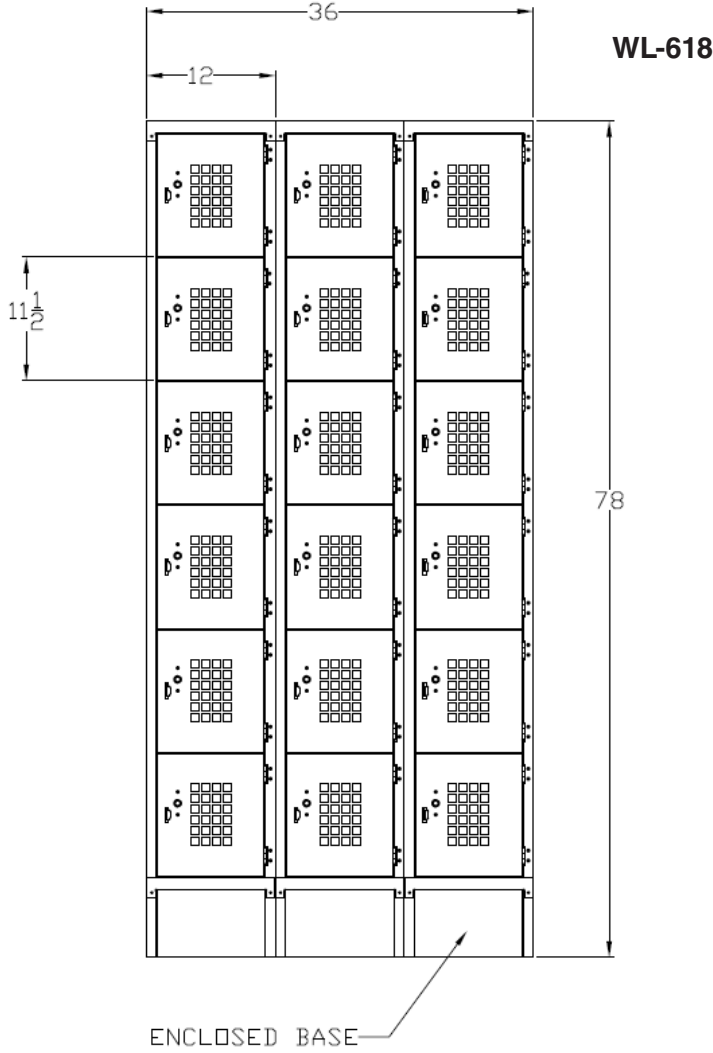
**Custom Colors Available**





Founded in 1946

# 18 Door Lockers



Model Number	Order#	Number of Doors	Overall Dimensions						Approx. Ship Wt	
			Width		Depth		Height		(lb)	(kg)
			(in)	(mm)	(in)	(mm)	(in)	(mm)		
WL-618	130358	18	36	914	12 1/8	307	78	1981	190	86
WL-618-15	163854	18	36	914	15	381	78	1981	211	95.8
WL-618-18	163900	18	36	914	18	457	78	1981	234	106

Freight Class: 125



In line with our policy to continually improve our products, Winholt reserves the right to change materials and specifications without notice.

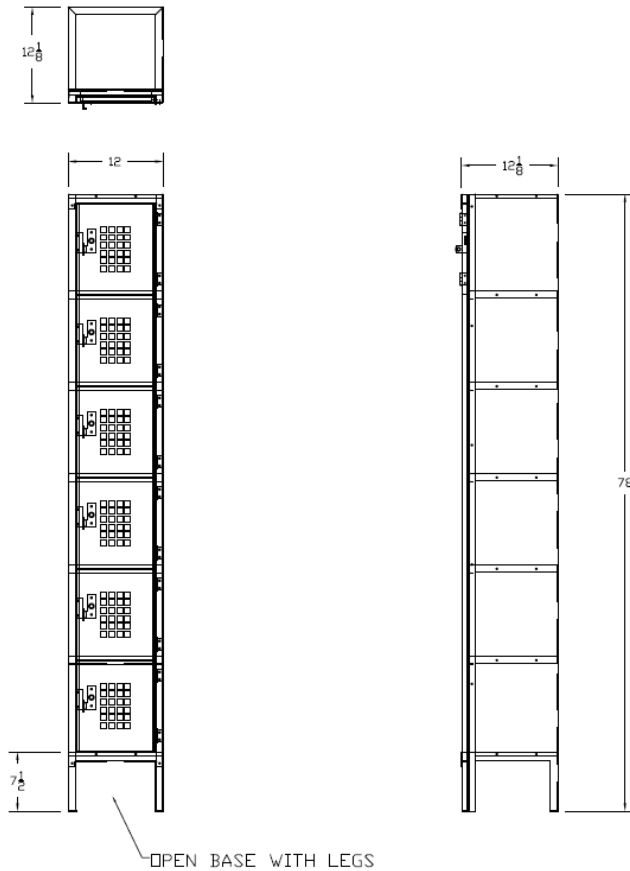


Founded in 1946

# 18 Door Lockers

18 DOOR LOCKERS

Features slant top to prevent debris build up.



Model Number	Order#	Number of Doors	Overall Dimensions						Approx. Ship Wt	
			Width		Depth		Height		(lb)	(kg)
			(in)	(mm)	(in)	(mm)	(in)	(mm)		
WL-618-ST	290992	18	36.3	922	12.2	310	84	2133	105	47.6

Freight Class: 125